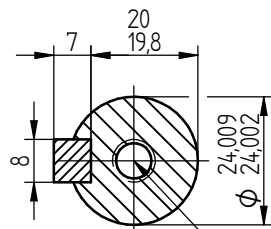


4 HOLES M8  
ON A 115 PCD



A-A  
1-1

HOLE TAPPED M8x19  
DEEP TO DIN332 FORM 'D'

**TERMINAL BOX POSITION:**

- CAN BE ARRANGED AT EITHER 9, 12 OR 3 O'CLOCK.
- STANDARD TERMINAL BOX POSITION IS 12 O'CLOCK AS SHOWN.

**CONDUIT ENTRIES:**

- TERMINAL BOX CAN BE ROTATED AT 90° INTERVALS

ALL DIMENSIONS IN MILLIMETERS



FIRST ANGLE  
PROJECTION

**BROOK  
CROMPTON**

Produced by **Tamel** a company of **ATB**  
ELECTRIC MOTORS Technology in Motion

ALL MOUNTING DIMENSIONS: ISO 2768-mK ACC TO EN 22768-1/2

SHEET SIZE: **A3** TITLE: OUTLINE DIMENSIONS DRAWING TOTALLY ENCLOSED FAN-COOLED WP-DA90SX FRAME C FACE MOUNTED MOTOR

DRAWN	SZ	23-04-19	DRG. No.	WP-DA90SX B14	
CHECKED	RG	23-04-19	DRG. REF.		
SCALE	1 : 2,5		REVISION:	DATE	