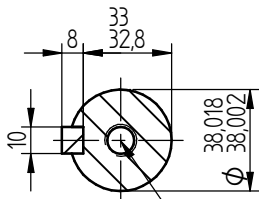


4 HOLES M10
ON A 165 PCD



A-A
1:2
HOLE TAPPED M12 X 28 DEEP
TO FORM DIN 332 "D"

- TERMINAL BOX POSITION:
 - CAN BE ARRANGED AT EITHER 9, 12 OR 3 O' CLOCK.
 - STANDARD TERMINAL BOX POSITION IS 12 O'CLOCK AS SHOWN.
- CONDUIT ENTRIES:
 - TERMINAL BOX CAN BE ROTATED AT 90° INTERVALS

ALL MOUNTING DIMENSIONS: ISO 2768-mK ACC TO EN 22768-1/2

ALL DIMENSIONS IN MILLIMETERS



FIRST ANGLE
PROJECTION

**BROOK
CROMPTON**

Produced by *Tamel S.p.A.* a company of **NTB**
Technology in Motion

SHEET SIZE: **A3**
 TITLE: **OUTLINE DIMENSIONS DRAWING TOTALLY ENCLOSED FAN COOLED WP-DA132MX FRAME C FACE MOUNTED MOTOR.**

| | NAME | DATE |
|---------|------|----------|
| DRAWN | SZ | 29-04-19 |
| CHECKED | RG | 29-04-19 |
| SCALE | 1:3 | |

DRG. No. WP-DA132MX B14

DRG. REF.

REVISION: _____ DATE _____